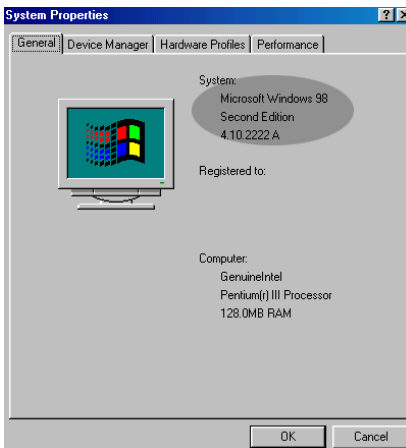


Introduction

To successfully use firewire capture within Swinger, your computer must be equipped with suitable firewire hardware, be using an appropriate operating system, have the Microsoft firewire drivers correctly installed, and be able to detect your video camera. This document describes how to check these requirements.

Firewire Hardware

Firewire capture within Swinger requires firewire hardware that is compatible with the firewire drivers supplied as part of the Windows 98 second edition (Win98se), Windows Millennium (WinMe), Windows 2000 (Win2000), and Windows XP (WinXP) operating systems. Some early hardware implementations of firewire are unsuitable and used proprietary drivers. Most current firewire hardware is compatible and this is usually stated on the packaging.



Operating System

You must be using either the Win98se, WinMe, Win2000, and WinXP operating systems. To check the name and version of the operating system-

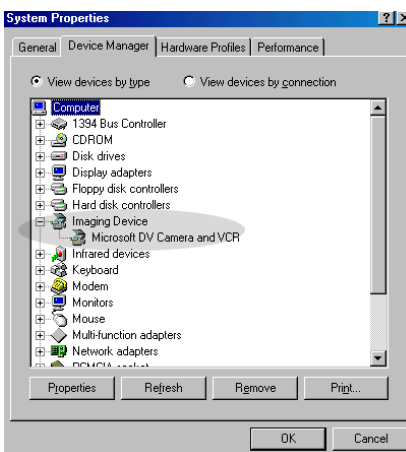
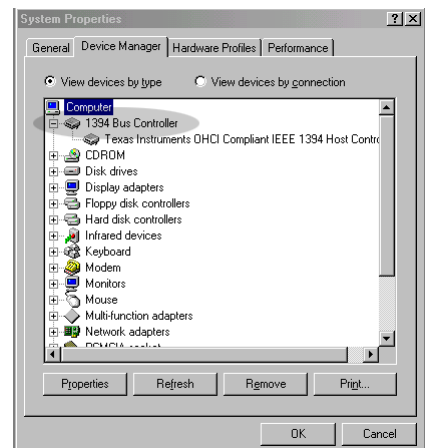
1. Click on *Start*, select *Settings* and Click on *Control Panel*.
2. Double-click on *System*.
3. The General tab provides information on the operating system.

If you are not using one of these operating systems, there is no point proceeding.

Firewire (IEEE1394) Drivers

The Microsoft drivers must be correctly installed. When you install firewire hardware in your computer, your computer will detect this and attempt to install the firewire drivers. You may be asked to insert your original Windows CD. If the firewire hardware was present when the operating system was installed, this process should have happened automatically. To check that the drivers are correctly installed-

1. Click on *Start*, select *Settings* and Click on *Control Panel*.
2. Double-click on *System*.
3. Then, for Win98se and WinMe select the *Device Manager* tab. For Win2000 and WinXP, click on *Device Manager* on the *Hardware* tab. The entry should be as shown here. The actual manufacturer of the hardware may be different but otherwise the entry should be the same. Do not have anything connected to the firewire port on your computer at this stage.



Detecting the Video Camera

Whilst displaying the 'Device Manager' page as described above, connect a digital video camera to the firewire port of your computer and turn it on. The *Device Manager* tab will change to include an *Imaging Device* entry, as shown here. This indicates that the computer and camera are 'talking' to each other. If the camera is then switched off, the *Imaging Device* entry should disappear.