

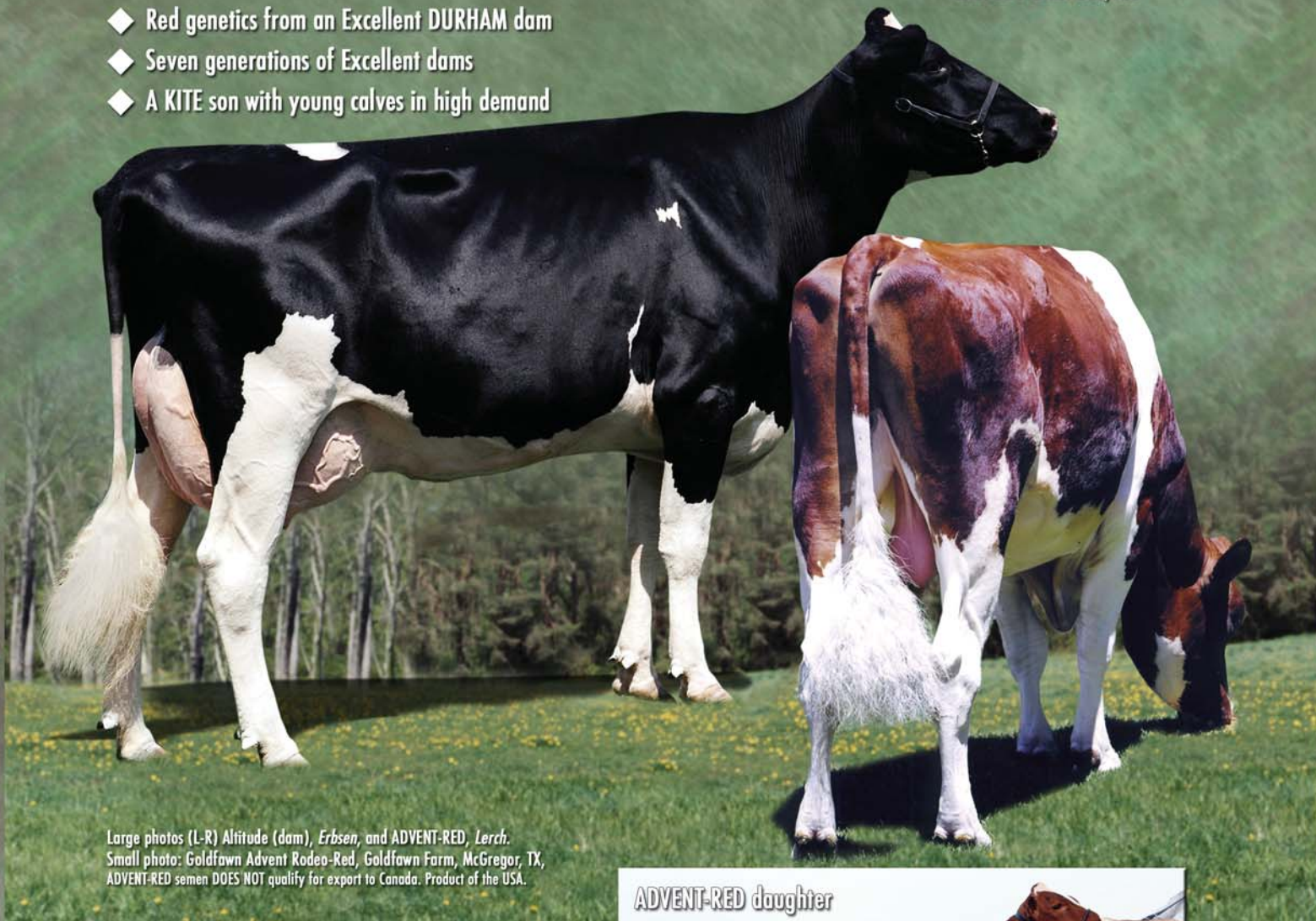
7H07872 KHW Kite

-ET\*TV

# ADVENT-RED

aAa: 324 DMS: 345,135

- ◆ Red genetics from an Excellent DURHAM dam
- ◆ Seven generations of Excellent dams
- ◆ A KITE son with young calves in high demand



Large photos (L-R) Altitude (dam), Erbsen, and ADVENT-RED, Lerch.  
Small photo: Goldfawn Advent Rodeo-Red, Goldfawn Farm, McGregor, TX,  
ADVENT-RED semen DOES NOT qualify for export to Canada. Product of the USA.



ADVENT-RED daughter

S: Markwell KITE-ET

D: Kamps-Hollow Altitude-ET (EX-90-EX-MS)  
2-0 365d 28,830M 3.8% 1,097F 3.5% 1,013P

MGS: Regancrest Elton DURHAM-ET (EX-90-GM)

MGD: Clover-Mist Alisha-ET (EX-93-2E-EX-MS-DOM)  
5-3 3x 365d 34,670M 4.8% 1,654F 3.3% 1,154P

3rd dam: Clover-Mist Augy Star-ET (EX-94-4E)

4th dam: D-R-A August (EX-96-4E)

5th dam: D-R-A Ideal Precious Leader (EX-90-2E)

6th dam: D-R-A Princess Lad Leader (EX-90-3E)



Phone: (614) 873-4683

Fax: (614) 873-5751

www.selectsires.com